

NOW linked with HydroCAD®

CARLSON HYDROLOGY

- THE COMPLETE HYDROLOGIC & HYDRAULIC SOFTWARE SOLUTION

Hydrology

- Site Drainage – Using either Rational or SCS Method
- Runoff Analysis – Determine Watershed Area, Time of Concentration & Peak Flow Rates

Plus Hydraulics

- Storm Drain System Design & Drafting
- Pond Design & Sizing

Add in the ability to link with HydroCAD [Over] for its Interactive watershed modeling and you have all the tools needed to tackle any hydrology challenge.



Layer-Based Runoff Calculations combine with DTM-Based Flow

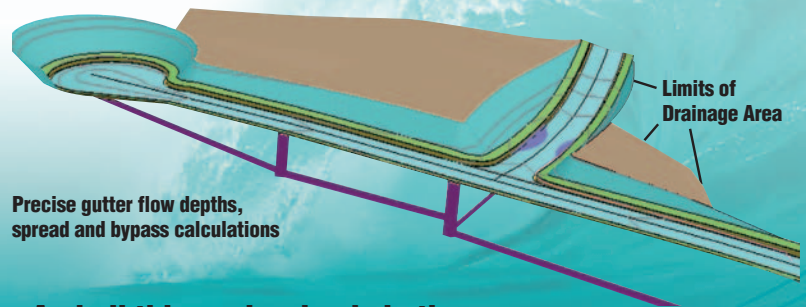
Automatically determines watershed areas and maximum length of runoff from DTM

- Tap extensive libraries on rainfall, inlets, manholes, outlets
- Calculate inlet intercepted and bypass flows, gutter spread and depth, pipe flow depth and velocity, and hydraulic and energy grade lines
- Get warnings for collisions, excessive pipe lengths, insufficient cover, lack of slope, excessive flow rates, and more
- Track runoff and analyze watershed – choose entire area or the watershed above a point such as a catch basin
- Design ponds, culverts, channels and outlet control structures
- Draft sewer pipe dynamically in plans, profiles and 3D

Carlson Hydrology — For a system-wide stormwater solution in 3D



- Get detailed pre- and post-construction hydrologic runoff analysis and reporting
- Create advanced storm drain design
- Determine precise pond design and sizing
- Get simultaneous analysis of Hydrologic Soil Groups, Ground Covers and Watersheds
- Generate accurate Hydrographs utilizing software's distinct Subareas



Precise gutter flow depths, spread and bypass calculations

And all this works simply in the commonly used CAD environment of polylines, text and layers.

Find Out More NOW!
Call or visit Carlson Software:
800-989-5028 • www.carlsonsw.com

Autodesk®
Authorized Developer



Authorized
IntelliCAD®
Technology
Consortium
Member



Free Technical Support
By Phone, Email, and Web



Carlson®

...Works Simply ...Simply Works

CARLSON HYDROLOGY

- STORM DRAIN DESIGN, POND SIZING, DYNAMIC 3D PLANNING & MORE

Carlson Hydrology's Top New Features

HydroCAD Linkage*. Extract all the sub-area information and automatically load into HydroCAD.

Grass Channel Design. New command to design grass channels.

HydroNET Explorer. New command to build and process network of subcatchments, ponds, reaches and links. Custom report tools with option to output to PDF.

Structure Library. Added controls to specify connection points on box structures.

Spreadsheet Sewer Editor. Added support for sanitary sewer and other utility type networks.

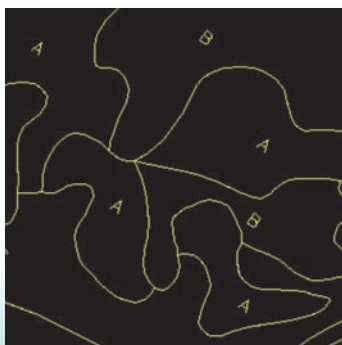
*Here's how Carlson Hydrology & HydroCAD work together *HydroCAD sold separately

Automate extraction of your watershed data. With Carlson Hydrology, subcatchment data can be automatically extracted from your AutoCAD or IntelliCAD site plan and instantly transmitted to HydroCAD 9.1 for further modeling and analysis.

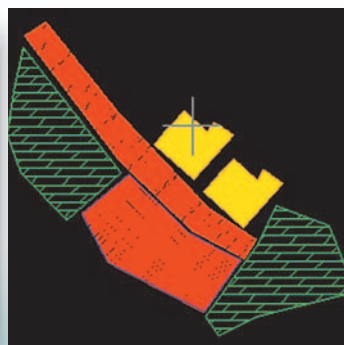
Map in Carlson Hydrology to transmit to HydroCAD. Mapped soil groups, ground covers and subcatchment boundaries, once transmitted to HydroCAD product instant hydrograph generation, complete reporting and much more.

Changes updated instantly. With Carlson Hydrology and HydroCAD together, changes to existing or proposed conditions are no longer a problem--just edit the necessary CAD layers and press UPDATE and it happens instantly.

Define Hydrologic Soil Group areas



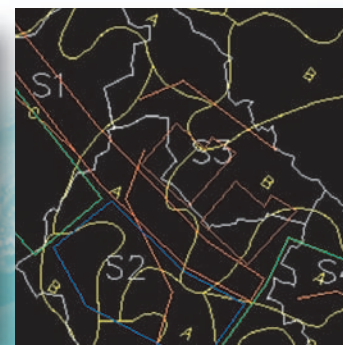
Define Ground Covers



Define Watersheds and longest flow paths



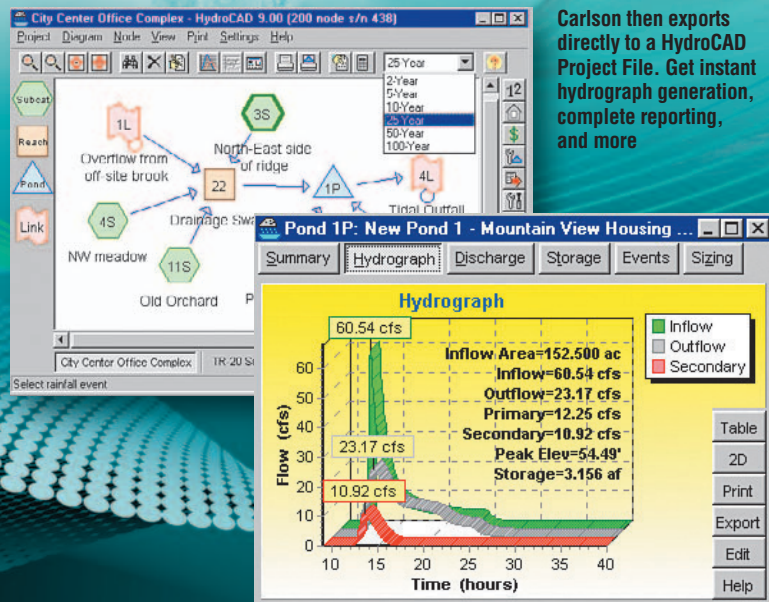
Combined, this is what you get



Update for automatic extraction of precise subcatchment sub-area data

Soil Group	Description	Area	% Area
1 C	Paved roads w/curbs & sewers	99368.581	12.96
2 A	Paved parking	2012.650	0.26
3 C	Paved parking	89034.297	11.61
4 A	Paved roads w/curbs & sewers	11671.665	1.52
5 A	Woods, Fair	59434.274	7.75
6 B	Woods, Fair	7228.811	0.94
7 C	Woods, Fair	498156.863	64.96
8			

Total Area 766907.141



Carlson then exports directly to a HydroCAD Project File. Get instant hydrograph generation, complete reporting, and more